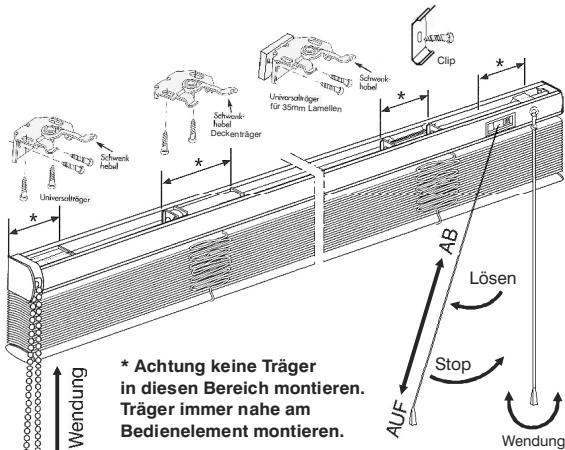
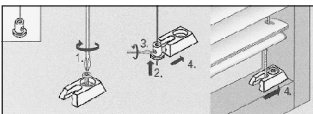


## Montageanleitung Maßjalousie

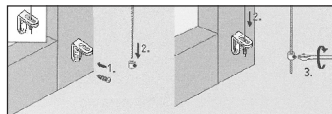


Träger	Breite cm
2	0 - 99
3	100 - 150
4	151 - 210
5	211 - 300

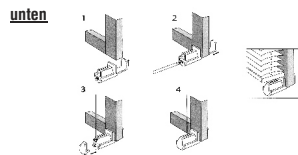
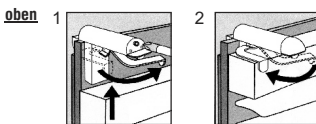
### Montage im Falz



### Montage auf Rahmen

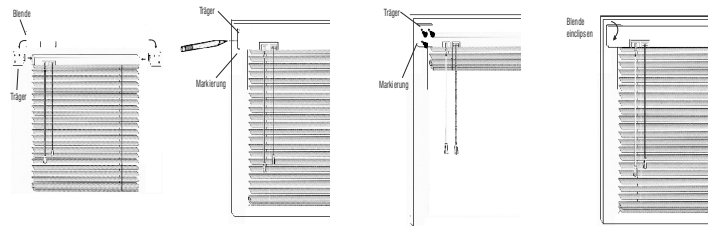


### Fensterflügelmontage mit Klemmträger

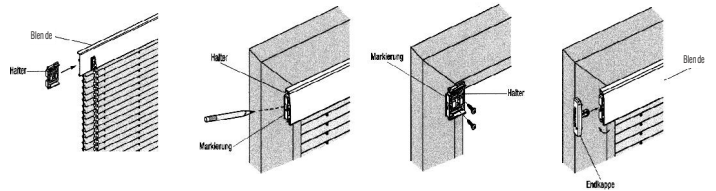


M0041-11A5PL-310308

## Montage Abdeckblende Comfort Line



## Montage Abdeckblende Exklusive Line



## Montage Spannfüße Exklusive Line / Bedienung mit Bediengriff

